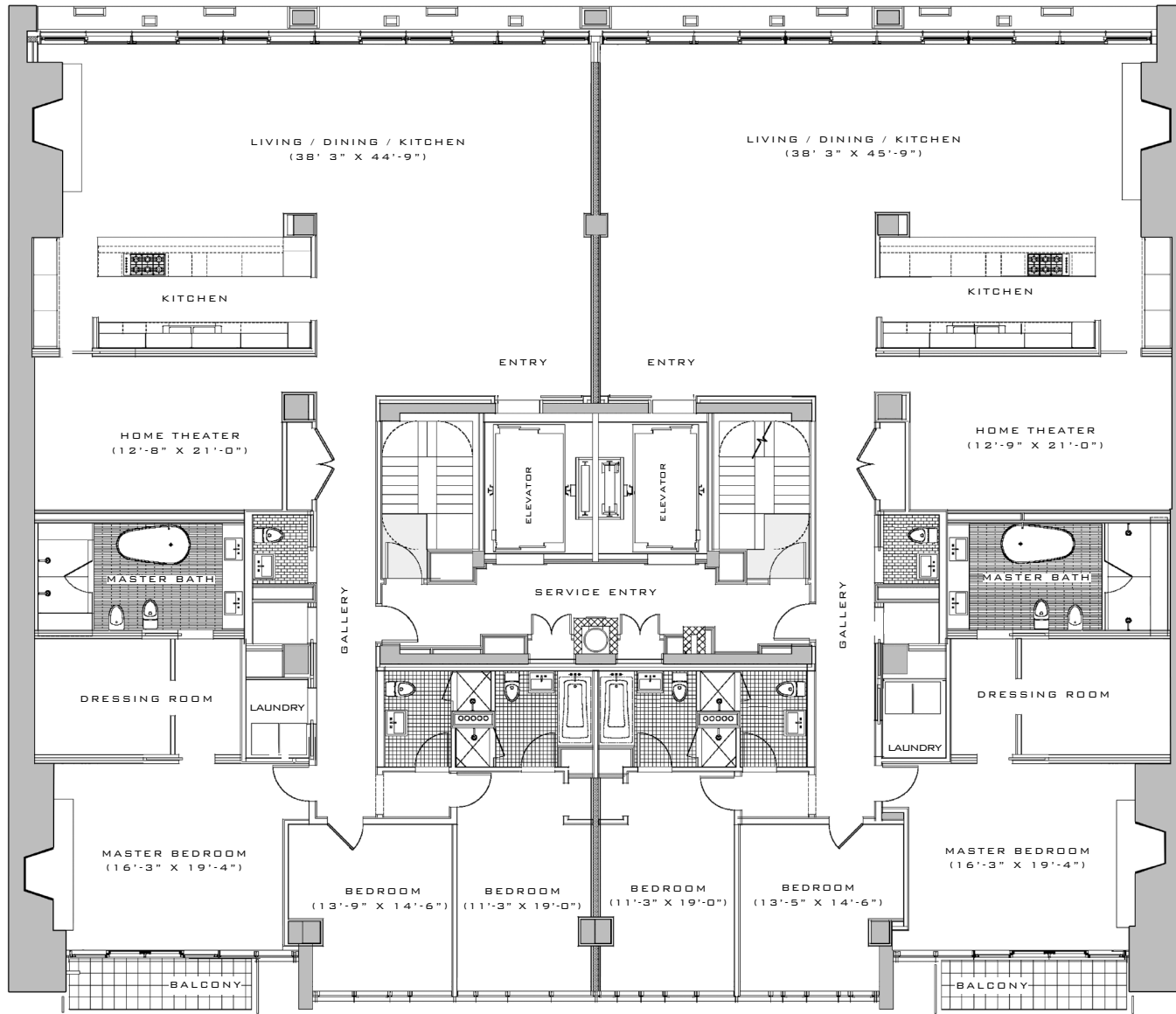


2 W

2 E


25 BOND STREET, NY, NY  
212-505-2222  
BONDING.25BOND.COM



- 10'-6" CEILINGS
- 3 BEDROOMS
- 3.5 BATHS
- 2 PRIVATE ATTENDED PARKING SPACES WITH DIRECT ELEVATOR ACCESS
- PRIVATE HOME THEATERS
- TWO WOOD BURNING FIREPLACES
- LUTRON HOMEWORKS DIMMING AND SHADE PACKAGE
- CRESTRON AUDIO-VISIO BACKBONE
- 24-HOUR TRUE CONCIERGE SERVICE
- GLASS ENCLOSED BALCONIES WITH SOUTHERN EXPOSURE
- DIRECT ELEVATOR ACCESS
- DEDICATED SERVICE ENTRANCES
- HAND CHISELED EGYPTIAN LIMESTONE FACADE
- 9'-6" TALL HAND FINISHED VENETIAN BRONZE SLIDING WINDOW WALL
- HAND FINISHED BRONZE ELEVATORS
- STONE TILED MASTER SPAS WITH SOAKING TUBS AND STEAM SHOWERS
- HEATED BATHROOM FLOORS
- FLOOR TO CEILING LIMESTONE TILED BATHS AND POWDER ROOMS
- LUALDI PORTE FROSTED GLASS AND LACQUERED DOORS
- HAND OILED 4" QUARTER SAWN OAK FLOORING
- BULTHAUP DESIGNED PERFORMANCE KITCHEN
- TEN PIECE APPLIANCE PACKAGES
- EMERGENCY GENERATOR
- HVAC MANAGEMENT CONTROL SYSTEM W/ REMOTE MONITORING CAPABILITY
- SIMULTANEOUS HEATING AND COOLING CAPABILITY
- SECURITY CARD ACCESS
- FLOOR THROUGH VENTILATION
- JOHN HOUSHMAND DESIGNED BRONZE AND WALNUT SLAB LOBBY DESK
- 3,000 SF URBAN LAWN
- COMMUNAL OUTDOOR GRILLING ENSEMBLE
- INDIVIDUAL LOBBY STORAGE SPACES
- INTERIOR RECREATION SPACE WITH FULL SERVICE CATERER'S KITCHEN
- HAND CARVED GRANITE SLAB SIDEWALKS

TWO 3,800 +/- SQUARE FOOT RESIDENCES  
MAY BE COMBINED TO BECOME ONE 7,600 +/-  
SQUARE FOOT RESIDENCE

THE UNIT LAYOUT, SQUARE FOOTAGE AND DIMENSIONS ARE APPROXIMATE AND SUBJECT TO NORMAL CONSTRUCTION VARIANCES AND TOLERANCES. TERMS ARE IN AN OFFERING PLAN AVAILABLE FROM THE SPONSOR FILE NO. C-060012 SPONSOR: SHINBONE ALLEY ASSOCIATES, LLC 110 GREENE STREET, NYC

GOLDMAN  

 CREATED BY GOLDMAN PROPERTIES  
 110 GREENE STREET, NY, NY 10012  
 WWW.GOLDMANPROPERTIES.COM  
 PROPERTIES